



BRAVUS.3000 MX double cylinder modular

SKU AB.B3000MX.DZ.410MX
Producer No. B3L410MX

The modular system variant ABUS Bravus MX allows you to react quickly, flexibly and safely to local conditions. MX is an option in the Bravus.3000 reversible key system.

In addition, the integrated drilling protection inlay made of high-strength stainless steel inside the cylinder offers increased drilling protection as well as additional pulling protection as standard.

The ABUS Bravus.3000 locking system combines legal copy protection with extremely high technical copy protection and thus guarantees secure protection against illegal key copies.

Bravus.3000 is equipped with the Intellitec system, a newly developed test unit on the key and in the cylinder. The multi-dimensional scanning of the Intellitec system prevents the locking process with an unauthorized key.

The Bravus.3000 system offers high-quality solutions for applications in the private, commercial and public sector.

Basic length

- from 30,5/30,5 mm
- measured from the middle of cam
- extension 5 mm per side

Technical characteristics

- patented Intellitec system for extremely high technical copy protection, highest protection against illegal key copies (multidimensional query)
- 3. safety level in the Bravus system (3 locking rows)
- 10 spring loaded locking elements and up to 6 code pins in three locking rows
- 6-pin system
- increased pulling protection due to stainless steel module bar as standard
- increased drilling protection as standard due to hardened steel pins and drilling protection inlay made of stainless steel
- 14 mm core diameter
- cam as standard made of sintered steel with burnished surface for high corrosion protection
- can be combined with the Bravus.3000 system
- according to DIN 18252 and DIN EN 1303
- patent protection until 2030

Execution

- reversible key system
- modular design
- cylinder body: nickel plated brass
- horizontal, easy key insertion
- combination with electronic systems possible at any time

Options / Special equipment

- different cylinder finishes *
- emergency and danger function

Cylinder version

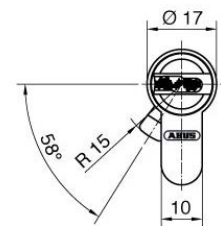
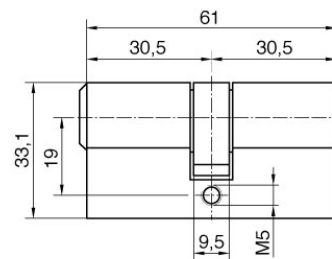
- not manufactured in modular design

Operational area

- indoors and outdoors, in conjunction with DIN mortise locks

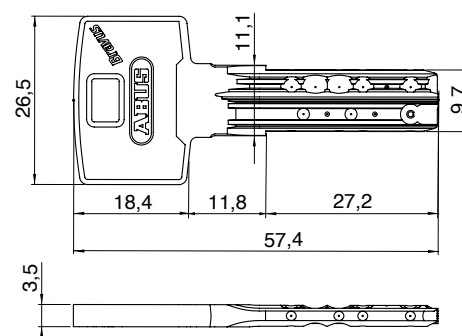
Scope of delivery

- modular double cylinder incl. 3 or more keys
- 1 fixing screw M5 x 75 mm
- security card



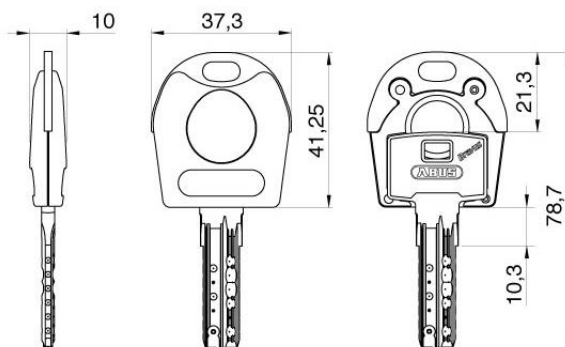
Key

- key thickness: 3,5 mm
- comfortable, stable reversible key made of wear-resistant nickel silver
- highest key copy protection
- plastic key caps (PRO CAP, SKUNI CAP) (optionally selectable)
- on request with integrated transponder for the control of electronic systems (compatible only with SKUNI CAP, later retrofitting not possible)



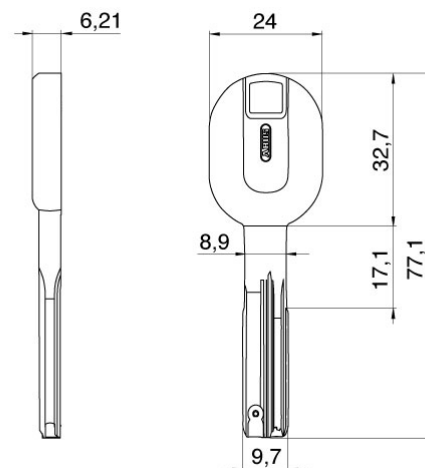
Key cap SKUNI CAP

- key caps without transponder
- key caps made of plastic with metal reinforcement made of nickel silver
- for special design requirements for the keys
- for easy optical differentiation
- increased locking comfort due to enlarged key head
- subsequent opening of the key cap as well as retrofitting or replacement is not possible
- the key cap is mounted using an ultrasonic welding process, so factory assembly is absolutely necessary
- on request with integrated transponder to control external systems such as time recording, parking management systems or cashless accounting systems
- use exclusively with keys from ABUS Pfaffenhain
- combination with electronics



Key cap PRO CAP

The PRO CAP key cap offers a wide range of colors to underline individuality. Thanks to the color designation, the keys can be distinguished at first glance. This makes searching for keys a thing of the past. Alternatively, you can use the different colors to identify group authorizations for your property. This allows you to control exactly who has access to which area.



Combination with electronics

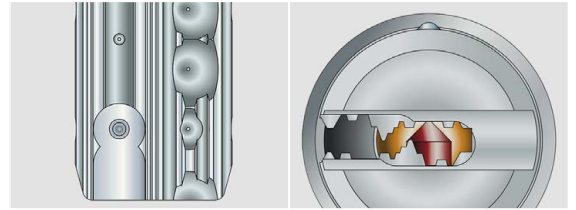
In an ABUS locking system, mechanical and electronic locking cylinders can be flexibly combined at any time. This potential for expansion allows you maximum flexibility and future security when planning your building security. With the combination keys, you can lock mechanical and electronic cylinders with just one key. Alarm systems, external systems or time recording and payment terminals can be integrated into the locking system at any time. The combination with electronic systems is very simple thanks to the SKUNI CAP. The key can be supplied directly from the factory as a mechanical-electronic combination key. Retrofitting electronic components at a later date is not possible.

Highest technical and legal copy protection through Intellitec system

With the key copying machines currently available on the market, no illegal copies of the Bravus key can be made.

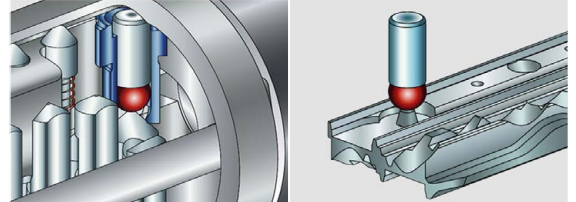
Attempts to make an illegal key copy fail because of the Intellitec system. The milling of a key with Intellitec system is not possible with standard key cutting machines. Without the Intellitec system on the key, the cylinder cannot be locked because the Intellitec system is scanned three-dimensionally in the cylinder. The Intellitec detector in the cylinder checks the exact shape, position and height of the Intellitec pin on the key. If a key does not have the corresponding Intellitec pin, it cannot be fully inserted into the key channel and the locking process is blocked.

The security card to the locking system is a further security feature. It must be presented to legitimately obtain a copy of the key.



system Intellitec on the key

precision profile



system Intellitec in the cylinder

query Intellitec

* this selection extends the delivery time