

PRODUCT DATA SHEET

sullus[®]
security systems



Magtec.2500 camlock cylinder

SKU AB.M2500.BK.456-H24
Producer No. M2500L456-H24

ABUS Magtec™ is the new conventional locking system from ABUS Pfaffenhausen. The innovative magnetic technology in the cylinder and in the key offers you a very high level of security against illicit key copies and manipulation of the locking system. The magnet embedded in the key reliably protects you from unauthorised key copies, which can be produced through the use of 3D printers.

Measurements

- installation depth: 34,7 mm
- body length: 26,9 mm
- clamping dimension (closing lever L22): 11,45 mm
- mounting hole: Ø 23,5 mm lateral reduced to 19,3 mm

Technical characteristics

- copy protection through magnetic technology in the key and cylinder
- with up to 15 spring loaded locking elements and up to 2 locking levels (in case of single lock / keyed alike)
- with up to 32 spring loaded locking elements and up to 4 locking levels (in case of locking system)
- increased drilling protection by special hardened steel pins for maximum resistance to illegal opening methods
- 14 mm core diameter
- locking path: 90°, lever adjustable in 45° steps by 360 degrees
- attack resistance class according to DIN EN 1303 - class B
- according to DIN EN 1303 and manufactured according to DIN 18252, certified according to ISO 9001
- CO₂ reduced compared to a conventional system
- max. patent term until 2038 (patent pending) and unlimited trademark protection

Execution

- conventional locking system
- cylinder body: nickel plated brass
- cylinder core made of Xerol (lead-free high-pressure alloy)
- key can only be removed in locked position
- combination with electronic systems possible at any time

Options / Special equipment

- different closing lever variants (standard: closing lever L22B)
- Always indicate the desired locking path when ordering!

Locking paths

- locking path 90°, right turning
- locking path 90°, left turning

Operational area

- letterboxes, wardrobe cabinets, safes, light poles or inspection flaps

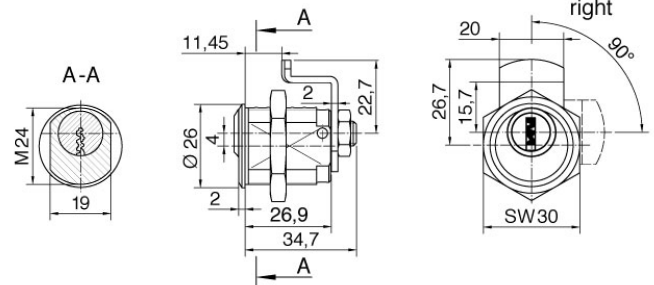
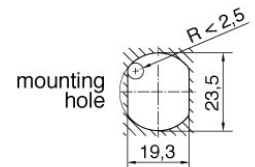
Scope of delivery

- camlock cylinder incl. 3 or more keys
- closing lever
- security card



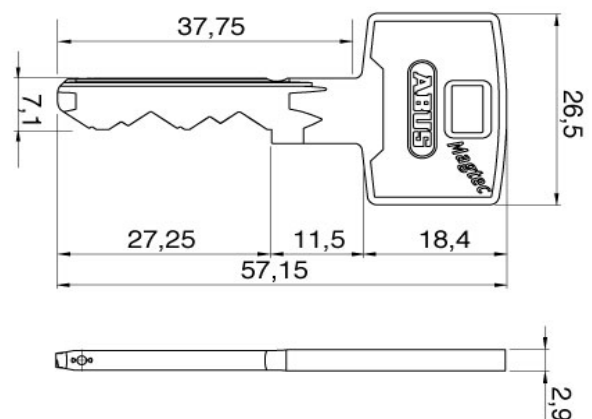
DIN EN
1303

DIN
18252



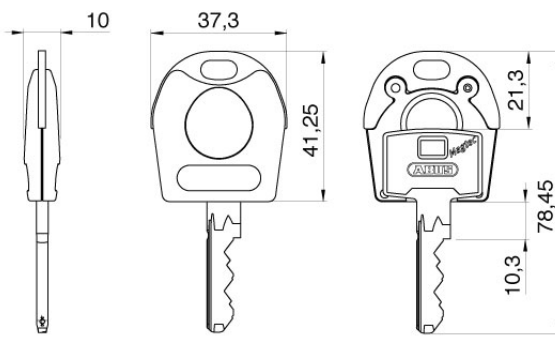
Key

- key thickness: 2,9 mm
- very stable, high quality serrated key made of wear-resistant nickel silver
- vertical, easy key insertion
- tech. key copy protection through magnetic technology in the key
- multiple paracentric curved profil
- plastic key cap (SKUNI CAP) (optionally selectable)
- on request with integrated transponder for the control of electronic systems (compatible only with SKUNI CAP, later retrofitting not possible)



Key cap SKUNI CAP

- key caps without transponder
- key caps made of plastic with metal reinforcement made of nickel silver
- for special design requirements for the keys
- for easy optical differentiation
- increased locking comfort due to enlarged key head
- subsequent opening of the key cap as well as retrofitting or replacement is not possible
- the key cap is mounted using an ultrasonic welding process, so factory assembly is absolutely necessary
- on request with integrated transponder to control external systems such as time recording, parking management systems or cashless accounting systems
- use exclusively with keys from ABUS Pfaffenhain
- combination with electronics



Combination with electronics

In an ABUS locking system, mechanical and electronic locking cylinders can be flexibly combined at any time. This potential for expansion allows you maximum flexibility and future security when planning your building security. With the combination keys, you can lock mechanical and electronic cylinders with just one key. Alarm systems, external systems or time recording and payment terminals can be integrated into the locking system at any time. The combination with electronic systems is very simple thanks to the SKUNI CAP. The key can be supplied directly from the factory as a mechanical-electronic combination key. Retrofitting electronic components at a later date is not possible.

3D key copy protection

Magtec.2500 offers you a very high level of security against illicit key copies. The magnet embedded in the key reliably protects you from unauthorised key copies, which can be produced through the use of 3D printers and intelligent key cutting machines. The security card offers you additional protection as an identification card - an all-round secure solution.

