

PRODUCT DATA SHEET

sullus[®]
security systems



Magtec.2500 double cylinder

SKU. AB.M2500.DZ.410ME
Producer No. M2500L410ME

ABUS Magtec™ is the new conventional locking system from ABUS Pfaffenhain. The innovative magnetic technology in the cylinder and in the key offers you a very high level of security against illicit key copies and manipulation of the locking system. The magnet embedded in the key reliably protects you from unauthorised key copies, which can be produced through the use of 3D printers.

For maximum flexibility, the profile cylinders have a modular design ME. They can therefore be quickly adapted to your new door at any time.

Basic length

- from 30,5/30,5 mm
- max. extension 70,5/70,5 mm
- measured from the middle of cam
- extension 5 mm per side

Technical characteristics

- copy protection through magnetic technology in the key and cylinder
- with up to 15 spring loaded locking elements and up to 2 locking levels (in case of single lock / keyed alike)
- with up to 32 spring loaded locking elements and up to 4 locking levels (in case of locking system)
- modular design as standard
- increased drilling protection by special hardened steel pins and drilling protection plate for maximum resistance to illegal opening methods
- increased pulling protection as standard due to modular bar
- 14 mm core diameter
- cam as standard made of sintered steel with burnished surface for high corrosion protection
- locking security class 6 according to DIN EN 1303
- highest attack resistance class according to DIN EN 1303 - class D
- fire resistance class B, T90
- according to DIN EN 1303 and manufactured according to DIN 18252, certified according to ISO 9001
- highest protection class according to SKG*** as standard (can be installed in RC2 doors) (equivalent to VdS A)
- CO₂ reduced compared to a conventional system
- max. patent term until 2038 (patent pending) and unlimited trademark protection

Execution

- conventional locking system
- cylinder body, cylinder core: Xerol (lead-free high-pressure alloy)
- combination with electronic systems possible at any time

Options / Special equipment

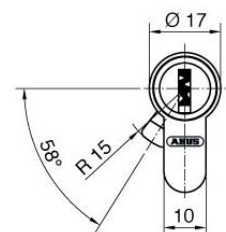
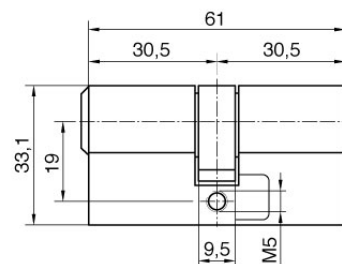
- emergency and danger function
- freewheel **

Operational area

- indoor and outdoor areas, in connection with DIN mortise locks

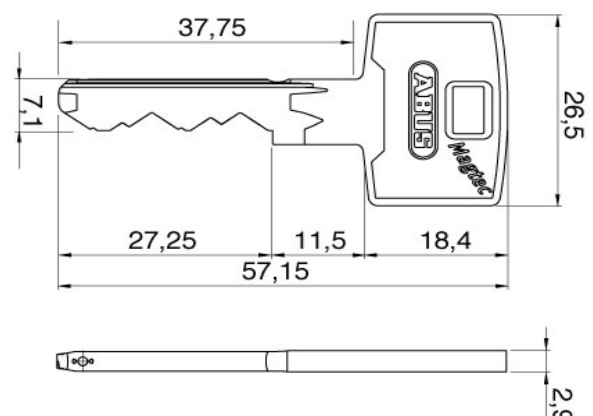
Scope of delivery

- double cylinder incl. 3 or more keys
- 1 fixing screw M5 x 75 mm
- security card



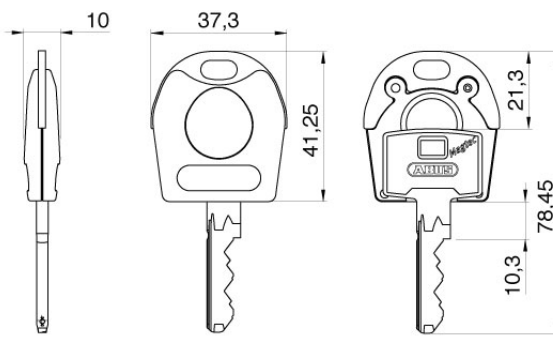
Key

- key thickness: 2,9 mm
- very stable, high quality serrated key made of wear-resistant nickel silver
- vertical, easy key insertion
- tech. key copy protection through magnetic technology in the key
- multiple paracentric curved profil
- plastic key cap (SKUNI CAP) (optionally selectable)
- on request with integrated transponder for the control of electronic systems (compatible only with SKUNI CAP, later retrofitting not possible)



Key cap SKUNI CAP

- key caps without transponder
- key caps made of plastic with metal reinforcement made of nickel silver
- for special design requirements for the keys
- for easy optical differentiation
- increased locking comfort due to enlarged key head
- subsequent opening of the key cap as well as retrofitting or replacement is not possible
- the key cap is mounted using an ultrasonic welding process, so factory assembly is absolutely necessary
- on request with integrated transponder to control external systems such as time recording, parking management systems or cashless accounting systems
- use exclusively with keys from ABUS Pfaffenhain
- combination with electronics

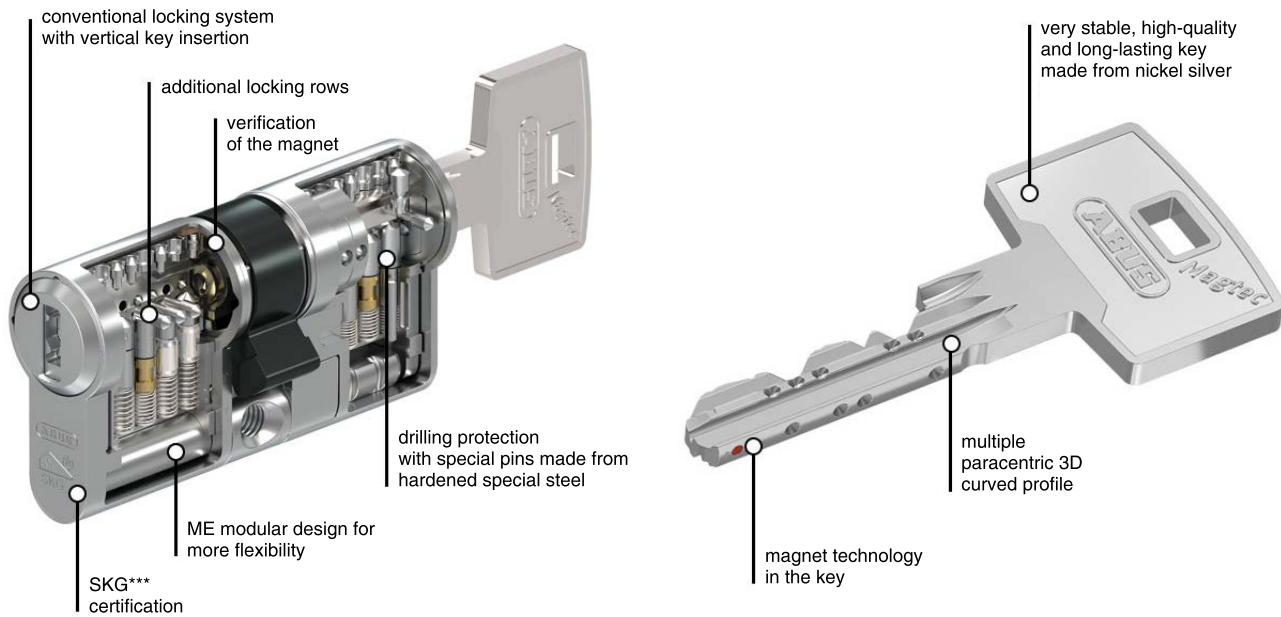


Combination with electronics

In an ABUS locking system, mechanical and electronic locking cylinders can be flexibly combined at any time. This potential for expansion allows you maximum flexibility and future security when planning your building security. With the combination keys, you can lock mechanical and electronic cylinders with just one key. Alarm systems, external systems or time recording and payment terminals can be integrated into the locking system at any time. The combination with electronic systems is very simple thanks to the SKUNI CAP. The key can be supplied directly from the factory as a mechanical-electronic combination key. Retrofitting electronic components at a later date is not possible.

3D key copy protection

Magtec.2500 offers you a very high level of security against illicit key copies. The magnet embedded in the key reliably protects you from unauthorised key copies, which can be produced through the use of 3D printers and intelligent key cutting machines. The security card offers you additional protection as an identification card - an all-round secure solution.



** on request