

## „Reach for the stars and secure your future“

With the DOM rs Sirius (commercial profile RS7SI) you get a high standard of security at an attractive price. The high level of technical copy protection „starline“ ensures that no illegal copies of keys are made. In combination with the integrated, high-level drilling and pulling protection as well as the up to 19-fold locking authorisation query, any attempt at manipulation stands (almost) no chance. The rs Sirius cylinders and keys are patented until 2043.

### Measurements

- installation depth: 33,8 mm
- body length: 25,3 mm
- clamping dimension (standard closing lever): 26,3 mm
- mounting hole: Ø 25 mm lateral reduced to 22,5 mm

### Technical characteristics

- bis zu 19-fache Schließberechtigungsabfrage
- up to 6 spring-loaded locking elements made of special brass/hardened steel and up to 11 lateral control pins on each locking side
- technical key copy protection „starline“ (integrated on the key) with additional SL-function pin
- high level of manipulation protection
- locking path: 90°, lever adjustable in 45° steps by 360 degrees
- patent protection until 2043 (pending)

### Execution

- cylinder body: brass matt nickel-plated
- serrated key system
- vertical key insertion
- key can only be removed when closed (forced closure)
- compatible with DOM electronics (made possible by integrating passive transponder technology into the key bow via a clip tag)

### Options / Special equipment

- different closing lever variants (standard: closing lever 20 x 3 x 50 mm)
- Always indicate the desired locking path when ordering!

### Locking path

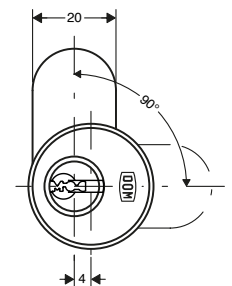
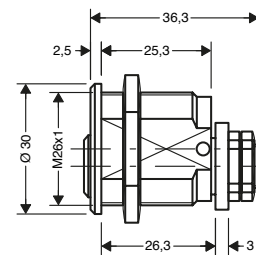
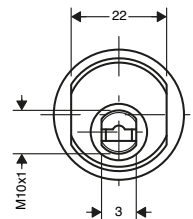
- locking path A: open on the top, closed on the left
- locking path B: open on the top, closed on the right
- locking path E: open on the bottom, closed on the left
- locking path F: open on the bottom, closed on the right

### Operational area

- letter box systems, metal cabinets, cassettes, tool compartments, etc.
- cloakroom lockers, inspection hatches, vending machines
- small to large companies
- complex locking systems, such as airports, financial buildings, residential buildings, hospitals, educational institutions

### Scope of delivery

- camlock cylinder incl. ordered keys
- closing lever
- security card



### Key

- key thickness: 2,6 mm
- nickel silver serrated key: corrosion-free and low-wear
- ergonomically shaped
- extended key neck adapted to standard security fittings
- modern design with red coloured ball embedded in the key
- high level of key copy protection thanks to additional technical function query on the key, key catch in the case of manipulation
- compatible with DOM clip tag

