

PRODUCT DATA SHEET



Akura double cylinder

sullus[®]
security systems

SKU EV.AKURA.DZ

Producer No. M.A44.PZ.DZ-M

The most flexible system for residential buildings on your side

What characterises a residential locking system? Safety, flexibility, attractive pricing and investment security. Akura 44 scores in all these categories.

The Akura 44 access system is suitable for many types of buildings due to its high performance capability. The reversible key, the security features of the system and the wide range of cylinder designs are ideal for residential locking systems. Many options for more security and easy installation expand the field of application. Thus, the security level can be increased with the optional copy protection.

Basic length

- from 30/30 mm, short cylinder from 27/27 mm
- measured from the middle of cam
- extension 5 mm per side

Technical characteristics

- modular design
- authorization check on cylinders occurs in several levels
- 3 locking pins levels
- combination of a variable length profile, 6 active and up to 10 passive scanning pins
- drilling protection in core and body (on both sides)
- pulling protection (on both sides)
- picking and scanning protection to protect against illegal opening methods
- fire resistance 90 minutes - suitable for fire doors
- cam movement 360 degrees, cam removal position 30 degrees (from the short side)
- width of cam: 9,3 mm
- certified according to DIN EN 1303:2015 160B0C6B
- patent protection until 2037

Execution

- reversible key system
- horizontal, easy key insertion
- cylinder body: brass matt nickel plated, cylinder core: basic material brass
- combination with electronic locking system possible

Options / Special equipment

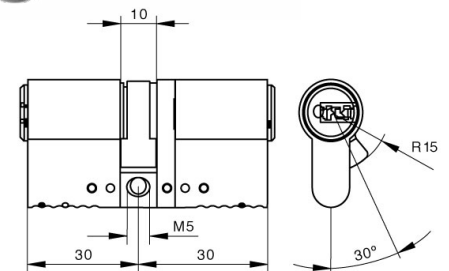
- different cylinder finishes *
- cylinder with magnetic protection
- emergency and danger function
- freewheel
- seawater resistance *
- wear resistance
- more options available soon: weather protection, Vario function

Operational area

- connecting doors, front doors, apartment entrance doors, tubular frame doors, security doors
- for well structured locking systems
- residential buildings, industry & commerce, office buildings
- mortise locks according to DIN, ÖNORM, surface mounted locks for Euro profile
- suitable for fire resistance doors

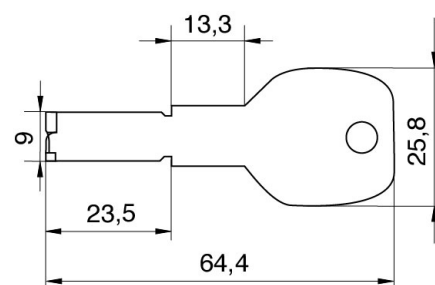
Scope of delivery

- double cylinder incl. ordered key
- fixing screw M5
- Installation tip: when installing, make sure that there is an outer overlap of max. 3 mm in connection with a door fitting that cannot be unscrewed from the outside!
- security card



Key

- key thickness: 3,5 mm
- variable length profile
- made from high quality nickel silver, strong key cross section
- very resistant, low wear
- 3D shaped key tip, torsion curve
- optimum grip and ergonomics
- optional: key with color dot, design key
- optional with magnetic pill - 100% 3D print secure (magnetic copy protection)
- soon available: key with extended key neck

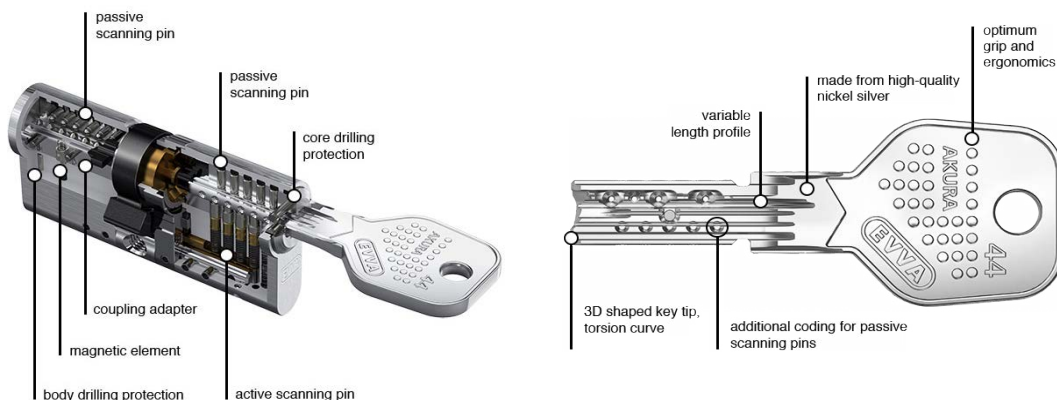


Technical details

The authorization check on Akura 44 cylinders occurs in several levels simultaneously, namely through the combination of a variable length profile, 6 active and up to 10 passive scanning pins, which also extend the calculation capacities. Optional magnetic copy protection protects critical access points, if required and makes it difficult to copy keys or manipulate with the cylinder.

The Akura 44 cylinder offers drilling, pulling, picking and scanning protection and thus protects against illegal opening methods. Increased core-pulling and drilling protection due to special hard metal elements in the core and body designed for doors with increased security risk (for double cylinders generally on both sides). Examples include side entrances and other doors into low-visibility access situations.

Due to the use of a special nickel silver alloy in the cylinder core, the locking cylinder withstands increased forces, e.g. in central cylinders in frequently locked entrance doors.



Modular design

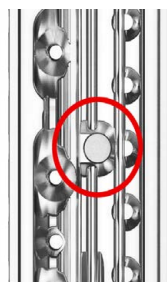
The AKURA 44 cylinders are manufactured in modular design and are therefore more than flexible. With the modular system, the cylinder length can be adjusted later by the specialist or a specific function (e.g. double-sided lockability) can be assigned to the cylinder. This allows you to benefit from flexible solutions and reduce your time and costs. The cylinder lengths can be changed in 5 mm steps.

On request more secure due to magnetic protection

The magnetic protection guarantees the key 100% 3D print security and the cylinder break-open security.

It is very difficult to copy the key even with professional tools, with the magnetic copy protection. A magnetic pill activates a mechanism in the locking cylinder that verifies locking authorization. **This option cannot be installed retrospectively and requires the use of the keys with magnet option.**

In a single or keyed alike locking system, a combination of cylinders with and without magnetic protection is not possible.

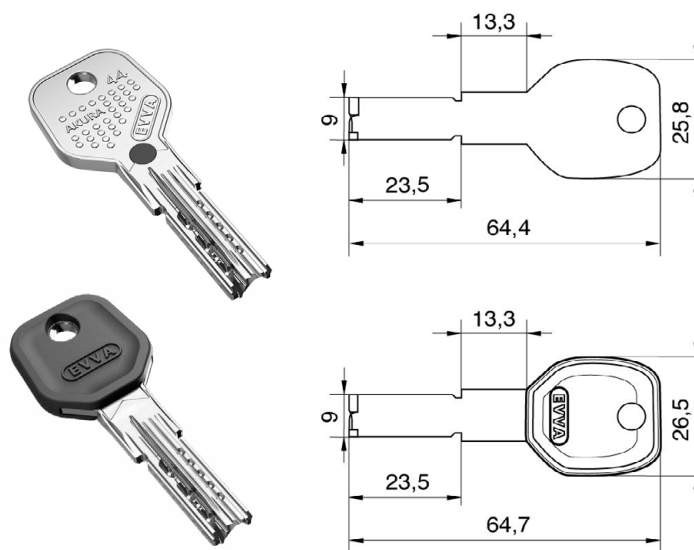


Key with color dot

- colors: eggplant, blue, brown, dark red, yellow, green, pink, red, black, purple
- color dot in a recess on the key neck
- for optical differentiation
- color dot may be different from the picture on the website

Design key

- colors: graphite black, traffic yellow, red orange, pigeon blue, pure white
- for optical differentiation
- key thickness: 3,5 mm, material thickness design cap: 5,6 mm
- 3D shaped key tip, torsion curve
- optimum grip and ergonomics
- optional with magnetic pill - 100% 3D print secure (magnetic copy protection)
- **factory assembly, subsequent opening and retrofitting is not possible**



* this selection extends the delivery time