

PRODUCT DATA SHEET



Akura padlock HM24

sullus[®]
security systems

SKU EV.AKURA.VH.HM24
Producer No. M.A44.HA.HM24

The most flexible system for residential buildings on your side

What characterises a residential locking system? Safety, flexibility, attractive pricing and investment security. Akura 44 scores in all these categories.

The Akura 44 access system is suitable for many types of buildings due to its high performance capability. The reversible key, the security features of the system and the wide range of cylinder designs are ideal for residential locking systems. Many options for more security and easy installation expand the field of application. Thus, the security level can be increased with the optional copy protection.

Measurements

- standard shackle height: 30 mm
- standard shackle width: 25 mm
- shackle: Ø 8 mm
- case width: 46 mm

Technical characteristics

- authorization check on cylinders occurs in several levels
- 3 locking pins levels
- combination of a variable length profile, 6 active and up to 10 passive scanning pins
- drilling protection in core and body
- pulling protection
- picking and scanning protection to protect against illegal opening methods
- locking path 90°, key can only be removed when closed
- forced locking of the safety bar
- patent protection until 2037

Execution

- reversible key system
- horizontal, easy key insertion
- high wear resistance
- padlock: brass, matt nickel plated
- shackle made of hardened, chemically nickel plated steel or stainless steel (Niro®)
- combination with electronic locking system possible

Options / Special equipment

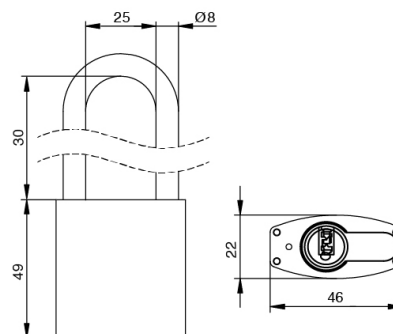
- different shackle heights (50 mm, 80 mm)
- another option soon available: Vario function

Operational area

- simple doors, which are locked with a latch
- roller shutters, barrier systems, chain fastenings, barrier fences
- for well structured locking systems
- residential buildings, industry & commerce, office buildings

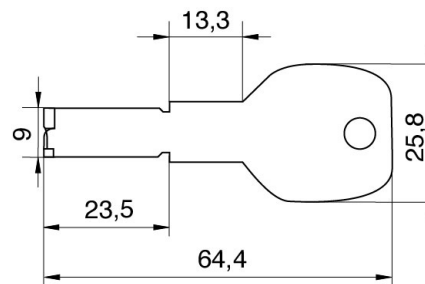
Scope of delivery

- padlock HM24 incl. ordered key
- security card



Key

- key thickness: 3,5 mm
- variable length profile
- made from high quality nickel silver, strong key cross section
- very resistant, low wear
- 3D shaped key tip, torsion curve
- optimum grip and ergonomics
- optional: key with color dot, design key
- optional with magnetic pill - 100% 3D print secure (magnetic copy protection)
- soon available: key with extended key neck

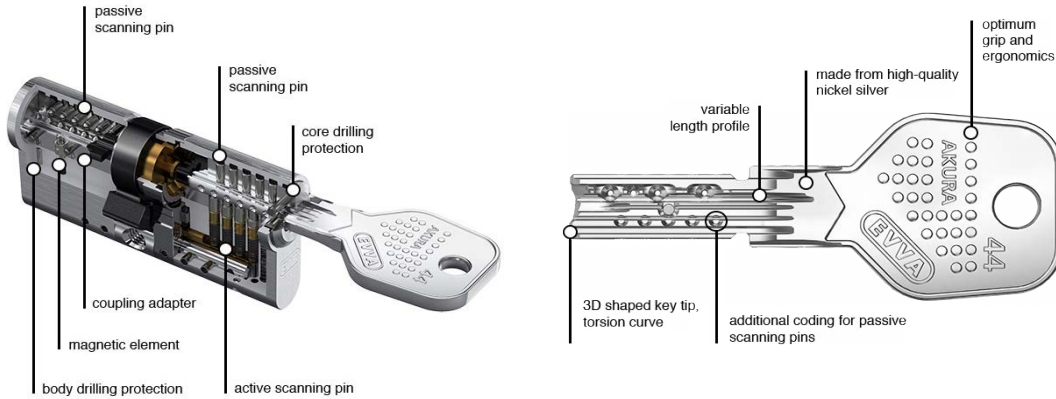


Technical details

The authorization check on Akura 44 cylinders occurs in several levels simultaneously, namely through the combination of a variable length profile, 6 active and up to 10 passive scanning pins, which also extend the calculation capacities. Optional magnetic copy protection protects critical access points, if required and makes it difficult to copy keys or manipulate with the cylinder.

The Akura 44 cylinder offers drilling, pulling, picking and scanning protection and thus protects against illegal opening methods. Increased core-pulling and drilling protection due to special hard metal elements in the core and body designed for doors with increased security risk. Examples include side entrances and other doors into low-visibility access situations.

Due to the use of a special nickel silver alloy in the cylinder core, the locking cylinder withstands increased forces, e.g. in central cylinders in frequently locked entrance doors.

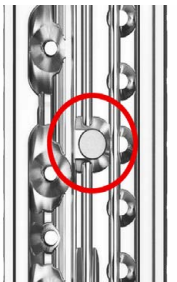


On request more secure due to magnetic protection

The magnetic protection guarantees the key 100% 3D print security and the cylinder break-open security.

It is very difficult to copy the key even with professional tools, with the magnetic copy protection. A magnetic pill activates a mechanism in the locking cylinder that verifies locking authorization. **This option cannot be installed retrospectively and requires the use of the keys with magnet option.**

For technical reasons, magnetic protection cannot be selected by this cylinder. If this cylinder is combined with a cylinder with magnetic copy protection, you need key with magnetic coding!



Key with color dot

- colors: eggplant, blue, brown, dark red, yellow, green, pink, red, black, purple
- color dot in a recess on the key neck
- for optical differentiation
- color dot may be different from the picture on the website

Design key

- colors: graphite black, traffic yellow, red orange, pigeon blue, pure white
- for optical differentiation
- key thickness: 3,5 mm, material thickness design cap: 5,6 mm
- 3D shaped key tip, torsion curve
- optimum grip and ergonomics
- optional with magnetic pill - 100% 3D print secure (magnetic copy protection)
- **factory assembly, subsequent opening and retrofitting is not possible**

