

# PRODUCT DATA SHEET

**sullus**<sup>®</sup>  
security systems



## EPS-5 padlock H30 (factory profile)

SKU EV.EPS5.VH.H30  
Producer No. EPS5 VH H30

EVVA EPS-5 factory profile (Extended Profile System) is a proven, conventional locking system developed on the locking elements or locking pin principle. The system is characterised by high wear resistance. The exact key centring due to the special profile rib construction ensures that the key can be inserted without any problems. It is a patented, multiple overlapping key profile and the authorization check is carried out on several security levels.

EPS reliably protects private homes, but is also a frequently and gladly used access system in clearly structured locking systems, such as in office buildings, restaurants or residential buildings.

### Measurements

- standard shackle height: 40 mm
- standard shackle width: 30 mm
- shackle: Ø 10 mm
- case width: 53 mm

### Technical characteristics

- compact design
- spring-loaded pin system with 5 active, spring-loaded sensing elements and up to 20 additional side codings
- integrated manipulation control of the key in the cylinder
- locking authorisation query by means of core rib profiling and profile locking bar, which is controlled spring-free via a curve in the body
- drilling protection: hardened HSS steel pins in the cylinder core, hardened steel ball to protect the connecting axle
- high wear resistance
- locking path 90°, key can only be removed when closed
- forced locking of the safety bar
- patent protection until 2041

### Execution

- conventional locking system
- length profile system with large key cross-sections
- patented, multiple overlapping key profile
- vertical, easy key insertion
- padlock: brass, matt nickel plated
- shackle made of hardened, chemically nickel plated steel or stainless steel
- round safety bar
- combination with electronic locking system possible

### Options / Special equipment

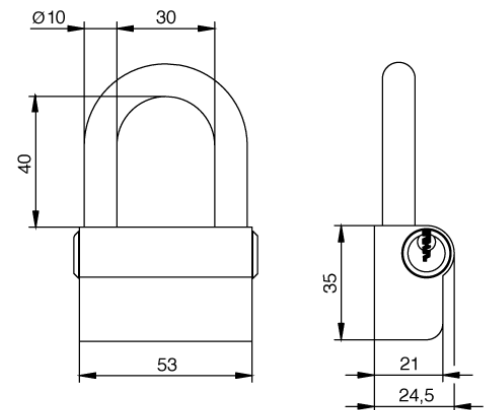
- different shackle heights (50 mm, 80 mm)

### Operational area

- simple doors that are locked with a heavy hold-up
- roller shutters, barrier systems, chain fastenings, barrier fences
- office building
- gastronomy
- residences
- for clearly structured locking systems

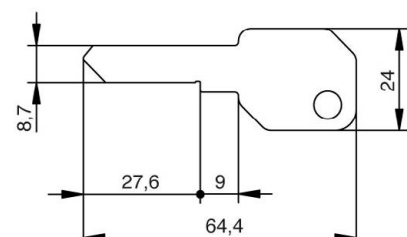
### Scope of delivery

- padlock H30 incl. 2 or more keys
- security card



### Key

- key thickness: 2,3 mm
- serrated key made of special resistant nickel silver alloy
- exact key centring: easy insertion of the key thanks to the special profile rib construction
- with large key cross-sections
- very resistant, low wear
- optional: key with design cap \*, key with extended key neck \*



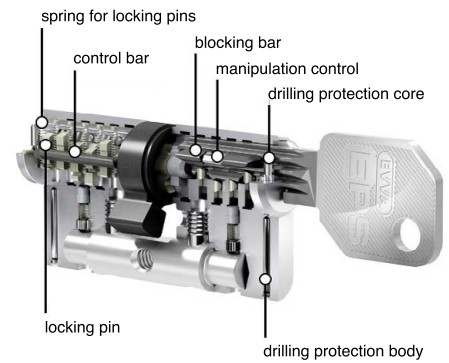
## Technical details

EPS is a spring-loaded pin system with 5 active, spring-loaded, sensing elements which offers up to 20 additional side codes. The integrated manipulation control of the key in the cylinder as well as the double-acting locking pins ensure good security.

EPS-5 consists of a length and a transverse profile as well as a pin system - this results in 3 security levels.

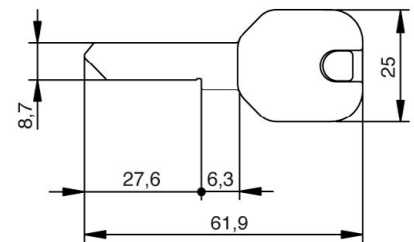
The control is carried out in the cylinder core when the key is inserted into the keyway - using the core rib profiling and a profile locking bar, which is controlled springlessly via a curve in the body.

The system is characterized by high wear resistance. The exact key centring due to the special profile rib construction ensures easy insertion of the key.



### Key with design cap

- colours: black, blue and red, yellow, green and white
- material thickness design cap: 7,2 mm
- plastic caps for special design requirements for the keys
- ergonomic design and high quality for better haptics
- easy optical differentiation
- simple management of locking systems through colour assignment
- consecutive numbering of the key (key with the same locking authorisation receives a consecutive number)
- use exclusively for EVVA keys
- factory assembly, subsequent opening and retrofitting is not possible



### Key with extended key neck

- specially shaped key
- for use with armoured fittings



\* this selection extends the delivery time