

MCS (Magnetic Code System) guarantees triple security through one magnetic and two mechanical codings. The permanent magnetisation holds constantly. The cylinder core contains 8 rotating magnetic rotors to which the 4 magnetic pills of the key are assigned. If is the key from keyway removed, they always assume a different position. Each magnetic pill can be magnetised differently on each side.

MCS is ideal for locking systems with high demands on perfection and security. Especially for objects where highly sensitive and irretrievable valuables have to be protected.

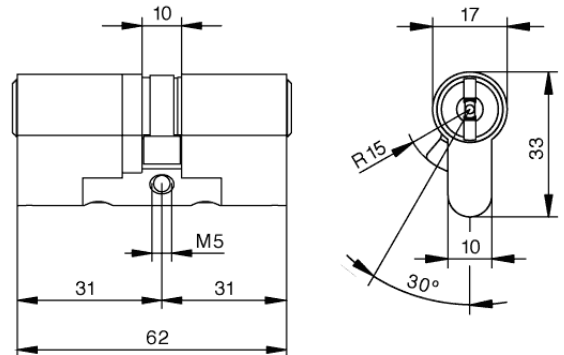
Locking system reserves can already be taken into account when planning the locking system.

Basic length

- from 31/31 mm
- measured from the middle of cam
- extension 5 mm per side

Technical characteristics

- magnetic code system in modular design
- double authorization queries during the locking process
- freely rotating magnetic rotors to which the four magnetic pills of the MCS key are assigned
- 7 additional springless mechanical horizontal locking elements
- mechanical control by a length profile system and positively controlled locking pin detection on both key sides
- carbide drilling protection in core and body (on both sides)
- pulling protection through chrome-nickel connecting axle
- breakaway and core pulling protection
- picking and scanning protection
- impact key protection
- cam movement 360 degrees, cam removal position 30 degrees (right of short side)
- width of cam: 9,3 mm
- certified according to DIN EN 1303:2015 16010C6D
- patent protection until 2035



Execution

- reversible key system
- vertical, easy key insertion
- high wear resistance
- cylinder body: brass matt nickel plated, cylinder core: base material brass
- combination with electronic locking system possible

Options / Special equipment

- different cylinder finishes *
- emergency and danger function
- weather protection *
- seawater version *

Operational area

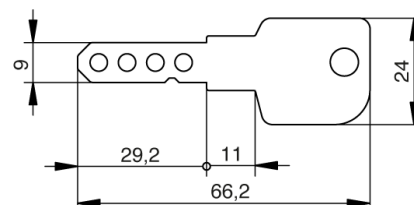
- front doors, connecting doors, office doors, interior doors, exterior doors, apartment doors, gates, wooden doors, aluminium doors, etc.
- for tubular frame doors, security doors
- suitable for mortise locks according to DIN, ÖNORM or mortise locks according to standardised European standards or with PZ perforation
- luxury trade, research institutions
- hospitals, International airports
- residences
- office building

Scope of delivery

- double cylinder incl. 3 or more keys
- fixing screw M5
- security card

Key

- key thickness: 2,4 mm
- magnetic key made of special resistant nickel silver alloy
- permanent magnets made of samarium-cobalt-5 guarantee a long life
- maximum key copying security
- very resistant, low wear
- optional: ergonomic design key *, key with colour dot *



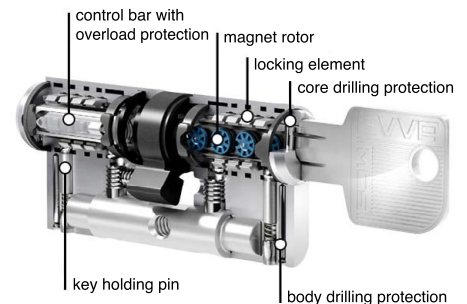
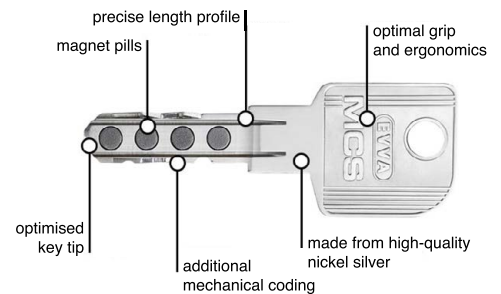
Technical details

Magnetic code system - maximum key copying security

The MCS cylinder contains a total of eight freely rotating magnetic rotors to the left and right of the key channel, to which the four magnetic pills of the MCS key are assigned. When an MCS key with a matching magnetic coding is inserted, all magnetic rotors are brought into the correct locking position. 2 mechanic bars above these assign the locking authorisation.

The mechanical control is carried out by a profile system (length profile) and by a positively controlled locking pin detection on both key sides with manipulation control. The permanent magnets made of Samarium-Cobalt-5 guarantee a long service life and cannot be remagnetized or demagnetized by conventional tools.

The unique magnetic keys guarantee maximum security against key copying. Each lock and each key is unique.



Modular design (SYMO)

The MCS cylinders are manufactured in modular design (SYMO) and are therefore more than flexible. With the modular system, the cylinder length can be subsequently adjusted by a specialist or a specific function (e.g. lockable on both sides) can be assigned to the cylinder. This allows you to benefit from flexible solutions and reduce your time and cost expenditure. The cylinder lengths can be changed in 5 mm increments.

Locking cylinder security

The innovative technologies of the MCS cylinder offer sustainable protection against illegal opening methods:

- **Picking and scanning protection**

The freely rotating magnetic rotors of the MCS cylinder are spatially separated from the key channel and therefore cannot be scanned or manipulated. This means that it is not possible to scan the magnetic coding in the MCS cylinder.

- **Protection against drilling**

The carbide elements in the MCS cylinder core provide effective protection against drilling (for double cylinders generally on both sides).

- **Pulling and tear-off protection**

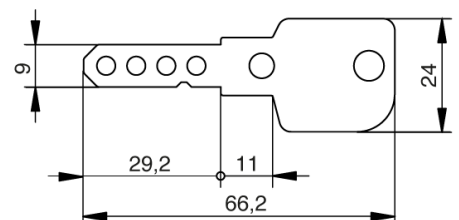
The carbide elements and the modular design (SYMO) have a high protective effect against pulling and tear-off attempts.

- **Impact key protection**

With this complicated opening method, burglar professionals use a so-called impact key to try to bring the query positions in the cylinder into the correct position.

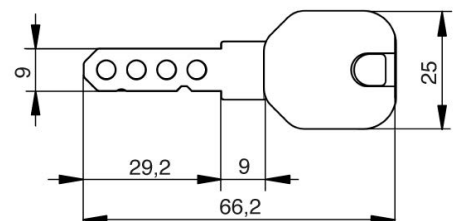
Key with coloured dot

- colours: red, blue, green, yellow, brown, black, violet, pink
- with countersunk colour dot on the key neck
- for optical differentiation
- colour dot may differ from the image on the website



Key with design cap

- colours: black, blue and red, yellow, green and white
- material thickness design cap: 7,2 mm
- plastic caps for special design requirements for the keys
- ergonomic design and high quality for better haptics
- easy optical differentiation
- simple management of locking systems through colour assignment
- consecutive numbering of the key (key with the same locking authorisation receives a consecutive number)
- use exclusively for EVVA keys
- factory assembly, subsequent opening and retrofitting is not possible



* this selection extends the delivery time