

ISEO GERA WS is a reversible key profile. The large number of profile variants in combination with 6 locking authorisation queries via the pin system offers a high degree of security against unauthorised re-locking. The nickel silver reversible keys are corrosion-free, low-wear, easy to handle and offer good locking convenience.

Key blanks of the profile series GERA WS are not freely available in the trade.

## Measurements

- case length: 27,5 mm
- mounting diameter: 30 mm
- drilling distance: 20,5 mm

## Technical characteristics

- 6 pairs of locking elements
- core pins made of special brass
- with trademark protection

## Execution

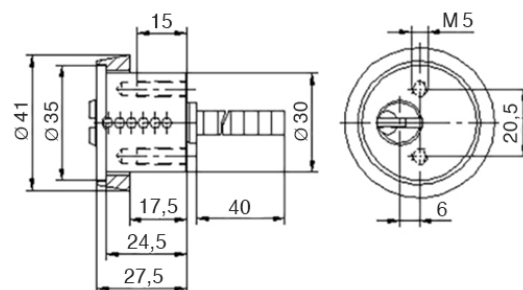
- reversible key system
- horizontal key insertion
- cylinder body: matt nickel plated

## Operational area

- indoor and outdoor areas
- in conjunction with DIN mortise locks
- private houses and apartments
- office and commercial areas

## Scope of delivery

- rim cylinder / round cylinder (type 4590) incl. 3 or more keys
- security card



## Key

- key thickness: 3 mm
- reversible key made of nickel silver
- corrosion-free, low-wear
- easy to handle and good closing comfort
- no key blanks freely available on the market

