



## keyTec RPE padlock type 85

SKU WINK.RPE.VH85

Producer No. RPE 85

With the patented keyTec RPE system from WINKHAUS, sophisticated locking technology can now also be implemented flexibly and economically in private homes.

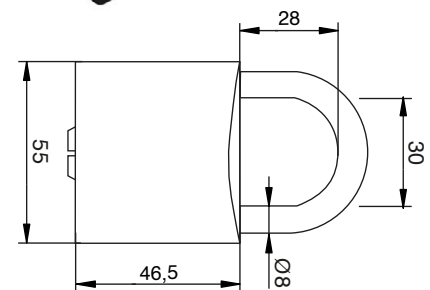
A new type of copy protection provides the certainty that only authorised persons can make a duplicate key. This is achieved by a specially shaped rib on the key, which is scanned in the locking cylinder by a locking ball (protectBall).

### Measurements

- standard shackle height: 28 mm
- clear width: 30 mm
- shackle: Ø 8 mm
- case width: 55 mm

### Technical characteristics

- 5 spring-loaded solid pin locking elements per side
- additionally up to 8 lateral springless controlled radial pins, which are scanned through bore recesses (calottes) on the key and thus improve scanning protection
- protection against drilling through hardened, stainless steel pins
- standard picking protection through special pins
- locking ball (protectBall) with rib check
- multiple paracentric key profiles for increased unlocking security
- core pins made of resistant hard bronze
- reinforced key insertion through special cylinder cores
- without forced locking
- manufactured according to DIN 18252 and EN 1303
- patent protection until at least 2028



### Execution

- conventional locking system
- vertical key insertion
- cylinder: brass, padlock: brass matt
- stainless steel shackle
- combination with electronic possible (mechatronic key or mechanical key with integrated transponder for the operation of electronic components such as electronic cylinders, access readers or electronic door fittings)

### Options / Special equipment

- different shackle heights (64 mm)

### Operational area

- simple doors that are locked with a latch (indoors and outdoors)
- medicine cabinets, filing cabinets
- cellar and lattice boxes, sheds, chain lock
- private homes
- small-scale enterprises
- shop premises

### Scope of delivery

- padlock incl. 3 or more keys
- security card

### Key

- key thickness: 3 mm
- serrated key made of wear-resistant nickel silver
- ergonomically shaped key head for better grip
- 13,1 mm key shaft for the combination of all common safety fittings
- specially shaped key tip for less wear
- modern key design
- high-quality plastic cap in different colours for individual adjustment
- caps in 5 colours: black (standard), blue, yellow, green, red
- material thickness cap: 4,7 mm

