



## keyTec X-tra double cylinder asymmetric

SKU WINK.XTRA.DZ57

Producer No. X-tra 57

The system combines the advantages of conventional „serrated keys“, such as a wide range of key profiles and a large number of variants, with the convenience of reversible key systems.

In addition to convenient operation, the variable locking surfaces with up to 20 spring-loaded radial pins and multiple stepped calotte bores, standard drilling and pulling protection and the special convex shape of the key ensure the high security of the X-tra reversible key system.

### Basic length

- from 27,4/34,6 mm
- max. up to 27,4/44,6 mm
- measured from the middle of cam
- extension in 5 mm steps

### Technical characteristics

- up to 20 radially arranged locking pins in 4 rows per side
- standard drilling and pulling protection: on the outside additional carbide pins in the cylinder core and in the cylinder body
- emergency and danger function
- picking protection
- high manipulation protection
- modular cylinder design for subsequent length change
- reinforced key insertion through special cylinder cores
- manufactured according to DIN 18252 and EN 1303
- patent protection until 2025

### Execution

- reversible key system
- comfortable vertical key insertion
- cylinder body: nickel plated brass
- one-piece cam made of sintered steel, non-toxic corrosion protection
- combination with electronic possible (mechatronic key or mechanical key with integrated transponder for the operation of electronic components such as electronic cylinders, access readers or electronic door fittings)

### Options / Special equipment

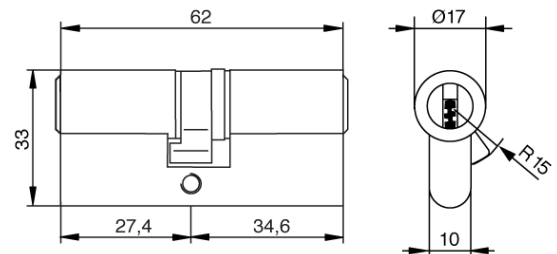
- different cylinder finishes \*
- key caps

### Operational area

- front doors, connecting doors, office doors, interior doors, exterior doors, apartment doors, gates, etc.
- interior and exterior areas, in connection with DIN mortise locks

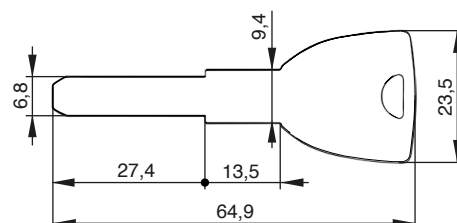
### Scope of delivery

- double cylinder asymmetric incl. 3 or more keys
- fixing screw
- security card



### Key

- key thickness: 3,4 mm
- comfortable reversible key
- increased wear resistance due to nickel silver material
- ergonomically shaped key head for better grip
- 13,5 mm key shaft for the combination of all common safety fittings
- variable longitudinal profiles prevent the insertion of unauthorised keys
- special key tip for better insertion comfort
- key cap in different colours optionally available
- material thickness cap: 5,8 mm
- caps in 5 intensive colours: blue, yellow, green, red, black



\* this selection extends the delivery time