



## BRAVUS.3000 MX double cylinder modular

SKU AB.B3000MX.DZ.410MX

Producer No. B3L410MX

The modular system variant ABUS Bravus MX allows you to react quickly, flexibly and safely to local conditions. MX is an option in the Bravus.3000 reversible key system.

In addition, the integrated drilling protection inlay made of high-strength stainless steel inside the cylinder offers increased drilling protection as well as additional pulling protection as standard.

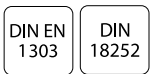
The ABUS Bravus.3000 locking system combines legal copy protection with extremely high technical copy protection and thus guarantees secure protection against illegal key copies.

Bravus.3000 is equipped with the Intellitec system, a newly developed test unit on the key and in the cylinder. The multi-dimensional scanning of the Intellitec system prevents the locking process with an unauthorized key.

The Bravus.3000 system offers high-quality solutions for applications in the private, commercial and public sector.

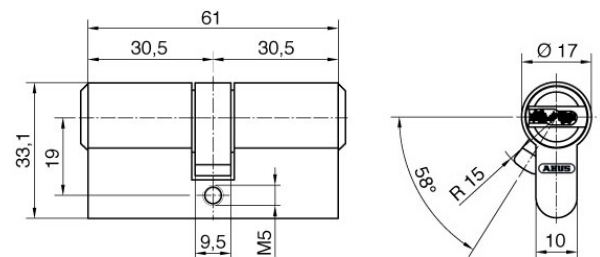
### Basic length

- from 30,5/30,5 mm
- measured from the middle of cam
- extension 5 mm per side



### Technical characteristics

- patented Intellitec system for extremely high technical copy protection, highest protection against illegal key copies (multidimensional query)
- 3. safety level in the Bravus system (3 locking rows)
- 10 spring loaded locking elements and up to 6 code pins in three locking rows
- 6-pin system
- increased pulling protection due to stainless steel module bar as standard
- increased drilling protection as standard due to hardened steel pins and drilling protection inlay made of stainless steel
- 14 mm core diameter
- cam as standard made of sintered steel with burnished surface for high corrosion protection
- can be combined with the Bravus.3000 system
- according to DIN 18252 and DIN EN 1303
- patent protection until 2030



### Execution

- reversible key system
- modular design
- cylinder body: nickel plated brass
- horizontal, easy key insertion
- combination with electronic systems possible at any time

### Options / Special equipment

- different cylinder finishes \*
- emergency and danger function

### Cylinder version

- not manufactured in modular design

### Operational area

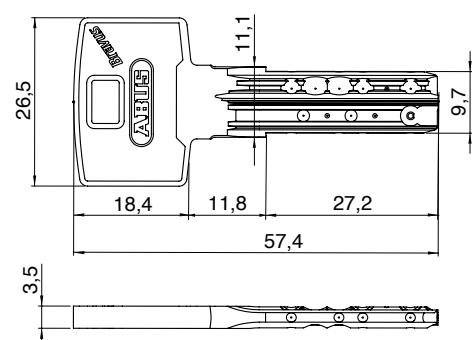
- indoors and outdoors, in conjunction with DIN mortise locks

### Scope of delivery

- modular double cylinder incl. 3 or more keys
- 1 fixing screw M5 x 75 mm
- Security card

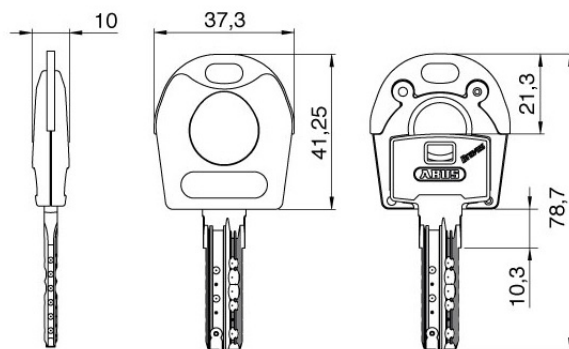
### Key

- key thickness: 3,5 mm
- comfortable, stable reversible key made of wear-resistant nickel silver
- highest key copy protection
- plastic key caps (COMBICAP, SKUNI)
- on request with integrated transponder for the control of electronic systems (compatible only with COMBICAP and SKUNI key, later retrofitting only with COMBICAP)



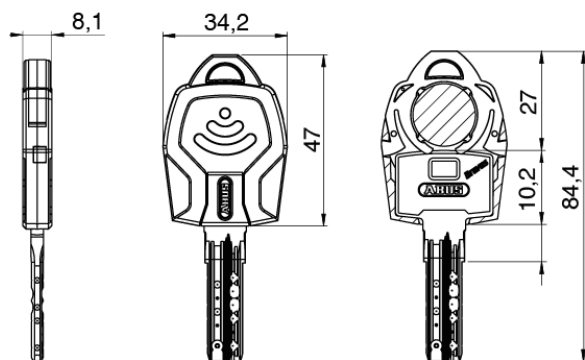
### Key cap SKUNI

- key caps without transponder
- key caps made of plastic with metal reinforcement made of nickel silver
- for special design requirements for the keys
- for easy optical differentiation
- increased locking comfort due to enlarged key head
- subsequent opening of the key cap as well as retrofitting or replacement is not possible
- the key cap is mounted using an ultrasonic welding process, so factory assembly is absolutely necessary
- on request with integrated transponder to control external systems such as time recording, parking management systems or cashless accounting systems
- use exclusively with keys from ABUS Pfaffenhain
- combination with electronics



### Key cap COMBICAP

- key caps without transponder
- retrofittable plastic key cap for all mechanical keys of ABUS locking systems (no factory installation)
- coloured and numbered key cap for easy optical differentiation of keys
- increased locking comfort due to enlarged key head
- COMBICAP enables the combination of mechanical and electronic cylinders in a locking system as well as the retrofitting of electronics
- transponder can be optionally integrated for the control of electronic systems such as time recording, parking management systems, alarm systems or cashless accounting systems
- integration of up to two transponders for different electronic functions, e.g. access control and payment function
- use exclusively with keys from ABUS Pfaffenhain
- combination with electronics



### Combination with electronics

In an ABUS locking system, mechanical and electronic locking cylinders can be flexibly combined at any time - either directly ex works or later in retrofitting. This potential for expansion allows you maximum flexibility and future-proofing when planning your building security. With the combination keys you can lock mechanical and electronic cylinders with just one key. Alarm systems, external systems or time recording and payment terminals can be integrated into the locking system at any time.

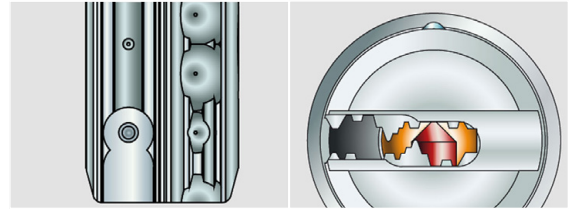
Thanks to COMBICAP and SKUNI CAP, combination with electronic systems is very easy. The key can be supplied directly from the factory as a mechanical-electronic combination key. Later retrofitting of electronic components is only possible with the COMBICAP.

### Highest technical and legal copy protection through Intellitec system

**With the key copying machines currently available on the market, no illegal copies of the Bravus key can be made.**

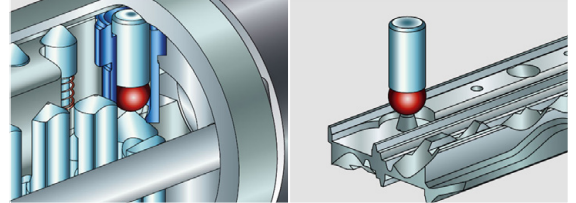
Attempts to make an illegal key copy fail because of the Intellitec system. The milling of a key with Intellitec system is not possible with standard key cutting machines. Without the Intellitec system on the key, the cylinder cannot be locked because the Intellitec system is scanned three-dimensionally in the cylinder. The Intellitec detector in the cylinder checks the exact shape, position and height of the Intellitec pin on the key. If a key does not have the corresponding Intellitec pin, it cannot be fully inserted into the key channel and the locking process is blocked.

The security card to the locking system is a further security feature. It must be presented to legitimately obtain a copy of the key.



Intellitec system on the key

Precision profile



Intellitec system in the cylinder

Intellitec query

\* this selection extends the delivery time