

PRODUCT DATA SHEET

sullus[®]
security systems



BRAVUS.3000 knob cylinder

SKU. AB.B3000.KZ.430
Producer No. B3L430

The Bravus.3000 system combines a legal copy protection with an extremely high technical copy protection and thus guarantees safe protection against illegal key copies.

Bravus.3000 is equipped with the Intellitec system, a newly developed test unit on the key and in the cylinder. The Intellitec system's multi-dimensional scanning prevents the locking process with an unauthorized key.

The Bravus.3000 system offers high-quality solutions for applications in the private, commercial and public sector.

Basic length

- from 30,5/30,5 mm
- measured from the middle of cam
- extension 5 mm per side
- Ordering information: The knob is always located on the inside of the cylinder.

Technical characteristics

- patented Intellitec system for extremely high technical copy protection, highest protection against illegal key copies (multidimensional query)
- 3. safety level in the Bravus system (3 locking rows)
- 10 spring loaded locking elements and up to 6 code pins in three locking rows
- 6-pin system
- standard drilling protection BS01 made of hardened special steel
- 14 mm core diameter
- cam as standard made of sintered steel with burnished surface for high corrosion protection
- according to DIN 18252 and DIN EN 1303, certified according to ISO 9001:2008
- patent protection until 2030

Execution

- reversible key system
- cylinder body: nickel plated brass
- horizontal, easy key insertion
- combination with electronic systems possible at any time

Options / Special equipment

- different cylinder finishes *
- increased drilling protection with SKG*** certificate *
- different knob designs, standard shape Z (shape H or shape O)*
- weather protection *

Cylinder version

- modular design

Operational area

- indoors and outdoors, in conjunction with DIN mortise locks

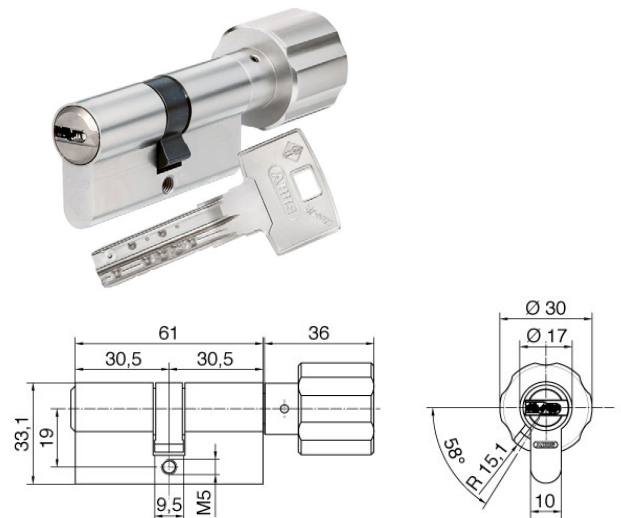
Scope of delivery

- knob cylinder incl. 3 or more keys
- 1 fixing screw M5 x 75 mm
- Security card



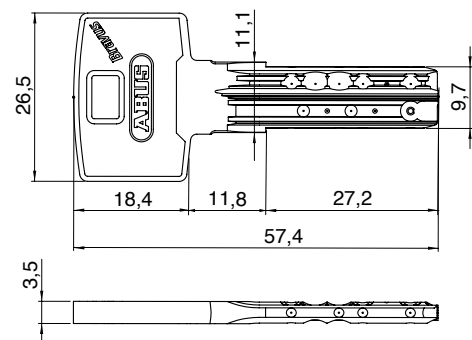
DIN EN
1303

DIN
18252



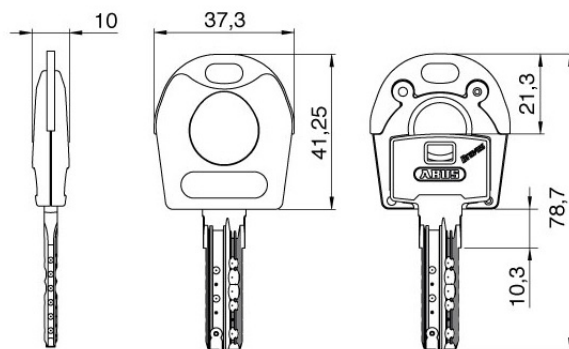
Key

- key thickness: 3,5 mm
- comfortable, stable reversible key made of wear-resistant nickel silver
- highest key copy protection
- plastic key caps (COMBICAP, SKUNI)
- on request with integrated transponder for the control of electronic systems (compatible only with COMBICAP and SKUNI key, later retrofitting only with COMBICAP)



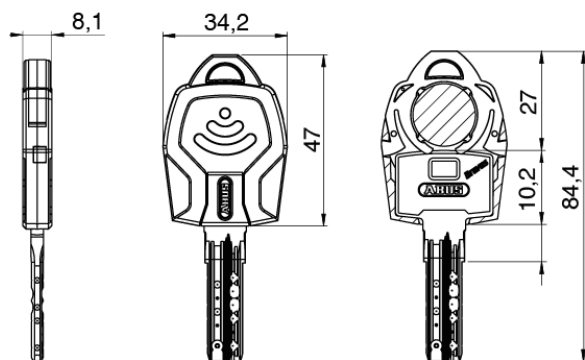
Key cap SKUNI

- key caps without transponder
- key caps made of plastic with metal reinforcement made of nickel silver
- for special design requirements for the keys
- for easy optical differentiation
- increased locking comfort due to enlarged key head
- subsequent opening of the key cap as well as retrofitting or replacement is not possible
- the key cap is mounted using an ultrasonic welding process, so factory assembly is absolutely necessary
- on request with integrated transponder to control external systems such as time recording, parking management systems or cashless accounting systems
- use exclusively with keys from ABUS Pfaffenhain
- combination with electronics



Key cap COMBICAP

- key caps without transponder
- retrofittable plastic key cap for all mechanical keys of ABUS locking systems (no factory installation)
- coloured and numbered key cap for easy optical differentiation of keys
- increased locking comfort due to enlarged key head
- COMBICAP enables the combination of mechanical and electronic cylinders in a locking system as well as the retrofitting of electronics
- transponder can be optionally integrated for the control of electronic systems such as time recording, parking management systems, alarm systems or cashless accounting systems
- integration of up to two transponders for different electronic functions, e.g. access control and payment function
- use exclusively with keys from ABUS Pfaffenhain
- combination with electronics



Combination with electronics

In an ABUS locking system, mechanical and electronic locking cylinders can be flexibly combined at any time - either directly ex works or later in retrofitting. This potential for expansion allows you maximum flexibility and future-proofing when planning your building security. With the combination keys you can lock mechanical and electronic cylinders with just one key. Alarm systems, external systems or time recording and payment terminals can be integrated into the locking system at any time.

Thanks to COMBICAP and SKUNI CAP, combination with electronic systems is very easy. The key can be supplied directly from the factory as a mechanical-electronic combination key. Later retrofitting of electronic components is only possible with the COMBICAP.

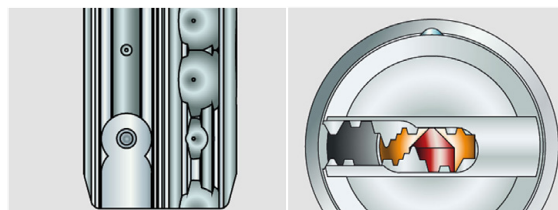
Technical details

Highest technical and legal copy protection through Intellitec system

With the key copying machines currently available on the market, no illegal copies of the Bravus key can be made.

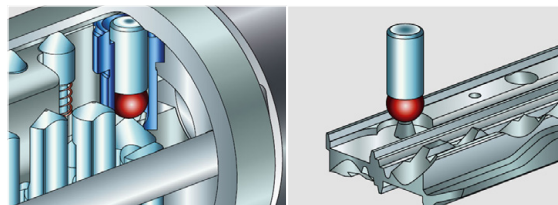
Attempts to make an illegal key copy fail because of the Intellitec system. The milling of a key with Intellitec system is not possible with standard key cutting machines. Without the Intellitec system on the key, the cylinder cannot be locked because the Intellitec system is scanned three-dimensionally in the cylinder. The Intellitec detector in the cylinder checks the exact shape, position and height of the Intellitec pin on the key. If a key does not have the corresponding Intellitec pin, it cannot be fully inserted into the key channel and the locking process is blocked.

The security card to the locking system is a further security feature. It must be presented to legitimately obtain a copy of the key.



Intellitec system on the key

Precision profile



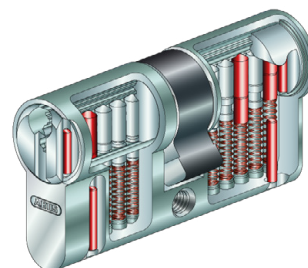
Intellitec system in the cylinder

Intellitec query

Security options

Increased drilling protection BS01 (standard)

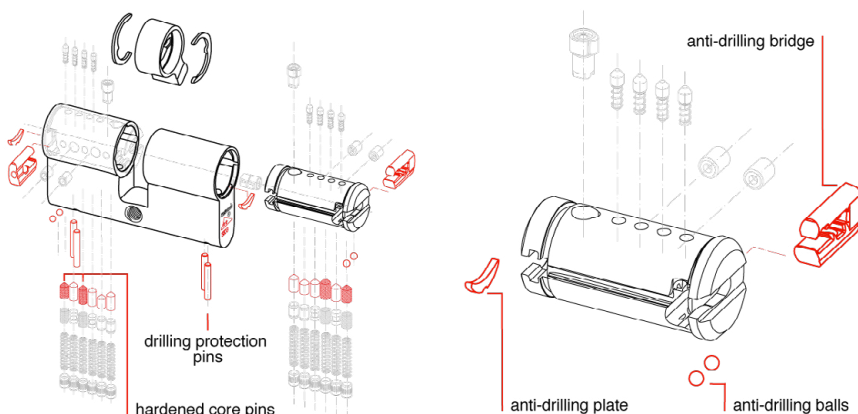
The drilling protection is achieved by using two additional hardened steel pins (the first and third pair of pins) in the cylinder core and body on each locking side (in double cylinders generally on both sides). This achieves the attack resistance class 2 according to EN 1303 and makes violent opening attempts more difficult.



Drilling protection BS01

Increased drilling protection with SKG*** certificate

The SKG*** certificate results from the use of four hardened steel pins and a frontal anti-drilling plate in the cylinder body, as well as an additional four hardened steel pins, two frontal anti-drilling balls and a further anti-drilling bridge in the cylinder core on each locking side. This certificate is used for special requirements on the attack resistance of the cylinders.



* this selection extends the delivery time