



## VITESS.1000 MX double cylinder modular

SKU AB.V1000MX.DZ.410MX  
Producer No. V1L410MX

The modular system variant ABUS Vitess MX makes it possible to react quickly, flexibly and safely to local conditions.

The integrated drilling protection inlay made of high-strength stainless steel inside the cylinder offers increased drilling protection as well as additional pulling protection as standard. The Intop system ensures a high level of technical copy protection.

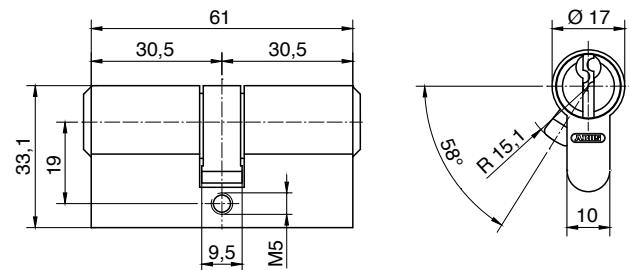
The integrated Intop system, a special test unit in the cylinder and on the key, as well as the multiple paracentric contour profile also guarantee effective protection against tampering with the cylinder and illegal key copies. In addition, the Vitess system can be expanded at any time and leaves you free to make changes at a later date.

### Basic length

- from 30,5/30,5 mm
- measured from the middle of cam
- extension 5 mm per side

### Technical characteristics

- first system level in Vitess
- Intop system for high technical copy protection
- conventional 6-pin locking system
- 6 spring-loaded locking elements on one locking row
- coded profile rib with profile sensing pin
- angled paracentric precision contour (picking protection)
- increased pulling protection due to stainless steel module bar as standard
- increased drilling protection due to hardened steel pins and drilling protection inlay made of stainless steel as standard
- 14 mm core diameter
- cam made of sintered steel with burnished surface for high corrosion protection as standard
- according to DIN 18252 and DIN EN 1303, certified according to ISO 9001:2008
- can be combined with Vitess.2000 or Vitess.4000
- patent protection until 2034



### Execution

- modular design
- cylinder body: nickel plated brass
- stable key with vertical, easy key insertion
- combination with electronic systems possible at any time

### Options / Special equipment

- different cylinder finishes \*
- emergency and danger function

### Cylinder version

- not manufactured in modular design

### Operational area

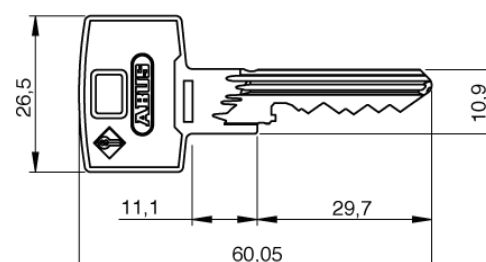
- indoor and outdoor areas, in connection with DIN mortise locks

### Scope of delivery

- modular double cylinder incl. 3 or more keys
- 1 fixing screw M5 x 75 mm
- security card

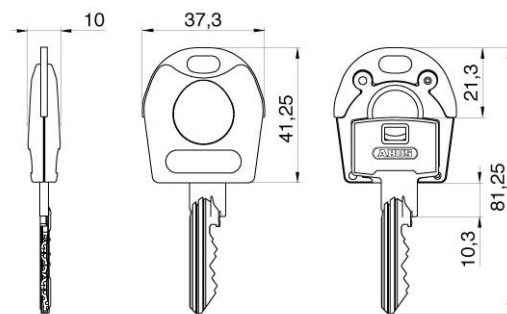
### Key

- key thickness: 2,6 mm
- stable serrated key made of wear-resistant nickel silver
- highest key copy protection through Intop system
- plastic key cap (SKUNI CAP) (optionally selectable)
- on request with integrated transponder for the control of electronic systems (compatible only with SKUNI CAP, later retrofitting not possible)



### Key cap SKUNI CAP

- key caps without transponder
- key caps made of plastic with metal reinforcement made of nickel silver
- for special design requirements for the keys
- for easy optical differentiation
- increased locking comfort due to enlarged key head
- subsequent opening of the key cap as well as retrofitting or replacement is not possible
- the key cap is mounted using an ultrasonic welding process, so factory assembly is absolutely necessary
- on request with integrated transponder to control external systems such as time recording, parking management systems or cashless accounting systems
- use exclusively with keys from ABUS Pfaffenhain
- combination with electronics



### Combination with electronics

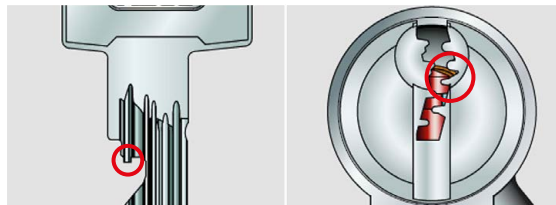
In an ABUS locking system, mechanical and electronic locking cylinders can be flexibly combined at any time. This potential for expansion allows you maximum flexibility and future security when planning your building security. With the combination keys, you can lock mechanical and electronic cylinders with just one key. Alarm systems, external systems or time recording and payment terminals can be integrated into the locking system at any time. The combination with electronic systems is very simple thanks to the SKUNI CAP. The key can be supplied directly from the factory as a mechanical-electronic combination key. Retrofitting electronic components at a later date is not possible.

## Technical details

---

### The patented Intop system

The Intop system is a newly developed test unit on the key and in the cylinder, which prevents the locking process with an unauthorised key. In combination with the coded profile rib and the multiple paracentric precision profile, it offers you effective protection against illegal key copying and tampering with the door lock.



system Intop

paracentric contour profile



test unit Intop on the key and in the cylinder

\* this selection extends the delivery time