



## keyTec N-tra padlock type 85

SKU WINK.NTRA.VH85  
Producer No. N-tra 85

The reversible key system WINKHAUS keyTec N-tra System offers a very special comfort. With the new key tip and the horizontal insertion, the key can be inserted into the cylinder even more easily and securely. Due to its rounded key shape the reversible key is also easy on trouser pockets and handbags.

In addition to the comfortable operation, the 6 spring-loaded solid pin locking elements on each side, the additional springless controlled radial pins and the standard drilling and picking protection provide a high level of protection against manipulation of the reversible key system keyTec N-tra.

### Measurements

- standard shackle height: 28 mm
- clear width: 30 mm
- shackle:  $\varnothing$  8 mm
- case width: 55 mm

### Technical characteristics

- 6 spring-loaded solid pin locking elements on each side and up to 8 springless controlled radial pins on 2 closing levels
- 6-pin system in 5-pin dimension
- standard drilling and picking protection due to hardened, stainless special pins
- profile scanning through catch pin function (manipulation protection)
- cross-shaped groove at the core
- stainless steel core pins
- reinforced key insertion through special cylinder cores
- without forced locking
- manufactured according to DIN 18252 and EN 1303
- patent protection until at least 2029

### Execution

- reversible key system
- comfortable horizontal key insertion
- cylinder: brass, padlock: brass matt
- stainless steel shackle
- combination with electronics possible (mechatronic key or mechanical key with integrated transponder for the operation of electronic components double knob cylinder, access reader, door fitting)

### Options / Special equipment

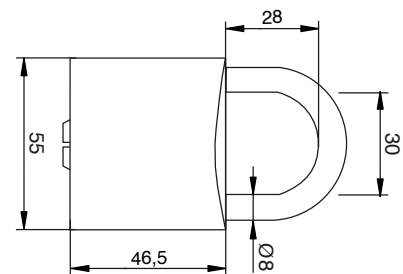
- different shackle heights (64 mm)

### Operational area

- simple doors that are locked with a latch (indoors and outdoors)
- medicine cabinets, filing cabinets
- cellar and lattice boxes, sheds, chain lock
- public institutions, schools, kindergartens
- shops, medical practices, office buildings
- small-scale enterprises
- large industrial plants

### Scope of delivery

- padlock including 3 or more keys
- Security card



### Key

- key thickness: 3,4 mm
- increased wear resistance due to nickel silver material
- ergonomically shaped key head for better grip
- 13,3 mm key shaft for the combination of all common safety fittings
- rounded key tip for better insertion comfort
- modern key design

