



## keyTec X-tra padlock type 85

SKU WINK.XTRA.VH85  
Producer No. X-tra 85

The system combines the advantages of conventional „serrated keys“, such as a wide range of key profiles and a large number of variants, with the convenience of reversible key systems.

In addition to convenient operation, the variable locking surfaces with up to 20 spring-loaded radial pins and multiple stepped calotte bores, standard drilling and pulling protection and the special convex shape of the key ensure the high security of the X-tra reversible key system.

### Measurements

- standard shackle height: 28 mm
- clear width: 30 mm
- shackle: Ø 8 mm
- case width: 55 mm

### Technical characteristics

- up to 20 radially arranged locking pins in 4 rows per side
- standard drilling and pulling protection: on the outside additional carbide pins in the cylinder core and in the cylinder body
- picking protection
- high manipulation protection
- reinforced key insertion through special cylinder cores
- without forced locking
- manufactured according to DIN 18252 and EN 1303
- patent protection until 2025

### Execution

- reversible key system
- comfortable vertical key insertion
- cylinder: brass, padlock: brass matt
- stainless steel shackle
- combination with electronics possible (mechatronic key or mechanical key with integrated transponder for the operation of electronic components double knob cylinder, access reader, door fitting)

### Options / Special equipment

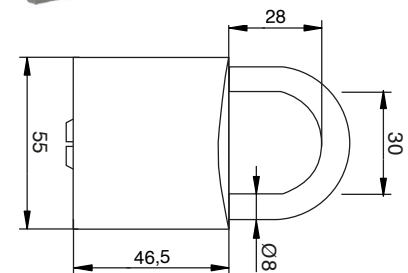
- different shackle heights (64 mm)

### Operational area

- simple doors that are locked with a hasp (indoors and outdoors)
- medicine cabinets, filing cabinets
- cellar and lattice boxes, sheds, chain lock

### Scope of delivery

- padlock incl. 3 or more keys
- Security card



### Key

- key thickness: 3,4 mm
- comfortable reversible key
- increased wear resistance due to nickel silver material
- ergonomically shaped key head for better grip
- 13,5 mm key shaft for the combination of all common safety fittings
- variable longitudinal profiles prevent the insertion of unauthorised keys
- special key tip for better insertion comfort
- key cap in different colours optionally available
- material thickness cap: 5,8 mm
- 5 intensive colours: blue, yellow, green, red, black

